



Liverpool Cathedral Events



Liverpool Cathedral

Designed by Sir Giles Gilbert Scott, Liverpool Anglican Cathedral is the largest in the UK and the fifth largest in the world. This fascinating and unique building is a historic landmark famously described by Sir John Betjeman as “one of the greatest buildings in the world”. Set within the heart of the city, we have developed an excellent reputation for hosting a variety of events ranging from large-scale, high profile galas to cultural programmes. From its majestic, expansive Main Space to intimate oak panelled function rooms; from the beautifully ornate Lady Chapel to the modern presentation theatre, Liverpool Cathedral has a full range of distinguished spaces to hold your event, and a team of Event professionals to assist you through every part of the process.



The Main Space

With its magnificent gothic arches, the highest and widest in the world, the central space offers historic beauty with a modern twist. Directly above the Main Space, the summit of the Tower reaches 331 feet (101m), offering spectacular panoramic views across the City.

Whether it's a candlelit dinner, star studded awards ceremony or a stylish canapé reception, this versatile and unique space will provide a truly memorable experience.

Reception 3000 Concert 2000 Dining 1000

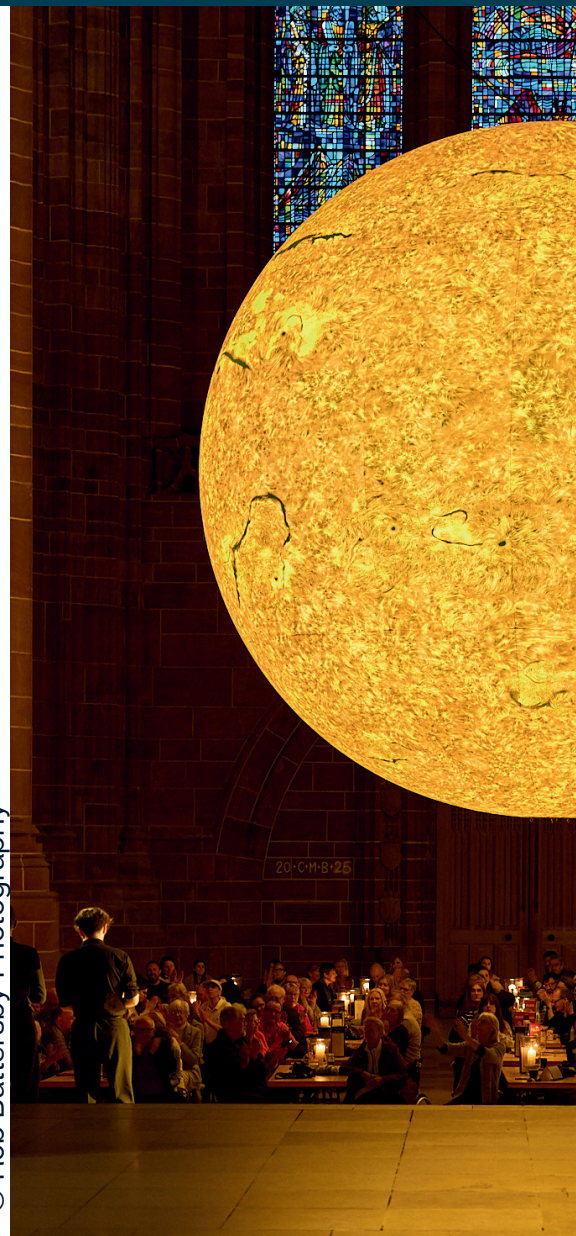
The Well

Although smaller than the Main space, the Well is no less spectacular. With stunning views through the Dulverton Bridge to the High Altar, it offers an exceptional view of the Cathedral.

With a natural stage, this space is perfect for receptions, intimate dinners and concerts. Artistic lighting can really transform any space in the Cathedral creating an extraordinary setting.

Reception 600 Concert 450 Dining 320

© Rob Battersby Photography





The Lady Chapel

The oldest and most ornate part of the Cathedral, the Lady Chapel offers its own private entrance and features some of the most beautiful stained glass in the Cathedral. The exceptional Chapel is ideally suited for drinks receptions,

Reception 250 Concert 200

Sir Giles Gilbert Scott Suite

In honour of the Cathedral's architect, the Sir Giles Gilbert Scott Suite comprises of two versatile and characteristic oak panelled rooms and a small boardroom, ideal as a breakout space or administrative base. The Suite also benefits from a sizeable Foyer which can be used for refreshments, breakout sessions or buffet service. An excellent space for hosting private dinners, conferences and meetings.

Dining Room

**Reception 150 Dining 100
Theatre 80
Classroom 50 Cabaret 48
Boardroom 30**

Concert Room

**Reception 150 Dining 80
Theatre 100
Classroom 60 Cabaret 56
Boardroom 40**



Frequently Asked Questions

Is the Cathedral licensed?

Yes. Alcoholic beverages can be served throughout the Cathedral, as an invoiced sale. Cash sales can take place in the Sir Giles Gilbert Scott Suite, the Welsford, and the Cathedral shop. The license permits the consumption of alcohol until 11pm in all spaces of the Cathedral.

Can the Cathedral provide catering?

Yes. Our in-house caterers, Flynnhurst offer a comprehensive range of services from business breakfasts to day delegate packages and hot buffets to 4-course fine dining. Flynnhurst have exclusivity of the Sir Giles Gilbert Scott Suite, however we also work with a number of preferred caterers for events throughout the main Cathedral.

What furniture does the Cathedral have?

Within the Sir Giles Gilbert Scott Suite, our hire prices include standard furniture such as banquet chairs, limited number of round and trestle tables, display panels and lecterns. Extra furniture such as staging and posers can be arranged and hired from a reputable supplier. We also work with a number of table dressers and florists who can provide excellent dressing packages.

What AV equipment does the Cathedral have?

Our AV equipment includes PA system with CD player, induction loop system, a number of microphones (wireless and lapel) and Wi-Fi throughout the Cathedral. Our Sir Giles Gilbert Suite also includes a 42" plasma screen in the Dining Room and a screen and LCD projector in the Concert Room. Hire of the AV equipment is subject to the space required; however we can assist in arranging additional AV equipment such as lighting, audio visual systems in any area.

Is there car parking?

Yes. Secure parking is available in the Cathedral grounds. Organisers can opt for guests to pay using the on-site 'pay on exit' system or a collective fee can be invoiced after the event by any organisation wishing to provide 'free/discounted' access to all who attend an event.

Are there accessible facilities?

Yes. Access to the Main Space from the car park is by lift. The Sir Giles Gilbert Scott Suite has ground floor access and benefits from a private entrance. We have accessible toilet facilities, designated car parking spaces and induction loop systems. A full access statement detailing all our facilities is available to download www.liverpoolcathedral.org.uk

When is the Cathedral available?

The times of hire are flexible but usually set between 7am and 11pm with vacation of the building by guests by midnight.



© Rob Battersby Photography

How to book...

1. Contact James Monaghan to discuss your requirements on 0151 702 7252
2. We will send you our quotation for your approval
3. Sign & return with our Terms and Conditions
4. Pay deposit (25% of the quoted total price, based on your estimated numbers)
5. Confirm the final details (this is usually a week before your event)
6. Enjoy safe in the knowledge that your dedicated event specialist is here to ensure smooth running of your event.

How to find us

Walking

The Cathedral is a short walk from the heart of the city centre, up a slight hill, Mount Pleasant, and then turn right onto Hope Street; continue along Hope Street until the junction with Upper Duke Street – or from John Lewis in Liverpool ONE, straight up Duke Street!

Rail

The nearest main line station is Liverpool Lime Street. Walk along Renshaw Street and then turn right into Berry Street. Continue to follow signs for Liverpool Cathedral and turn left into upper Duke Street and the main entrance is approx. 200 yards uphill on the right.

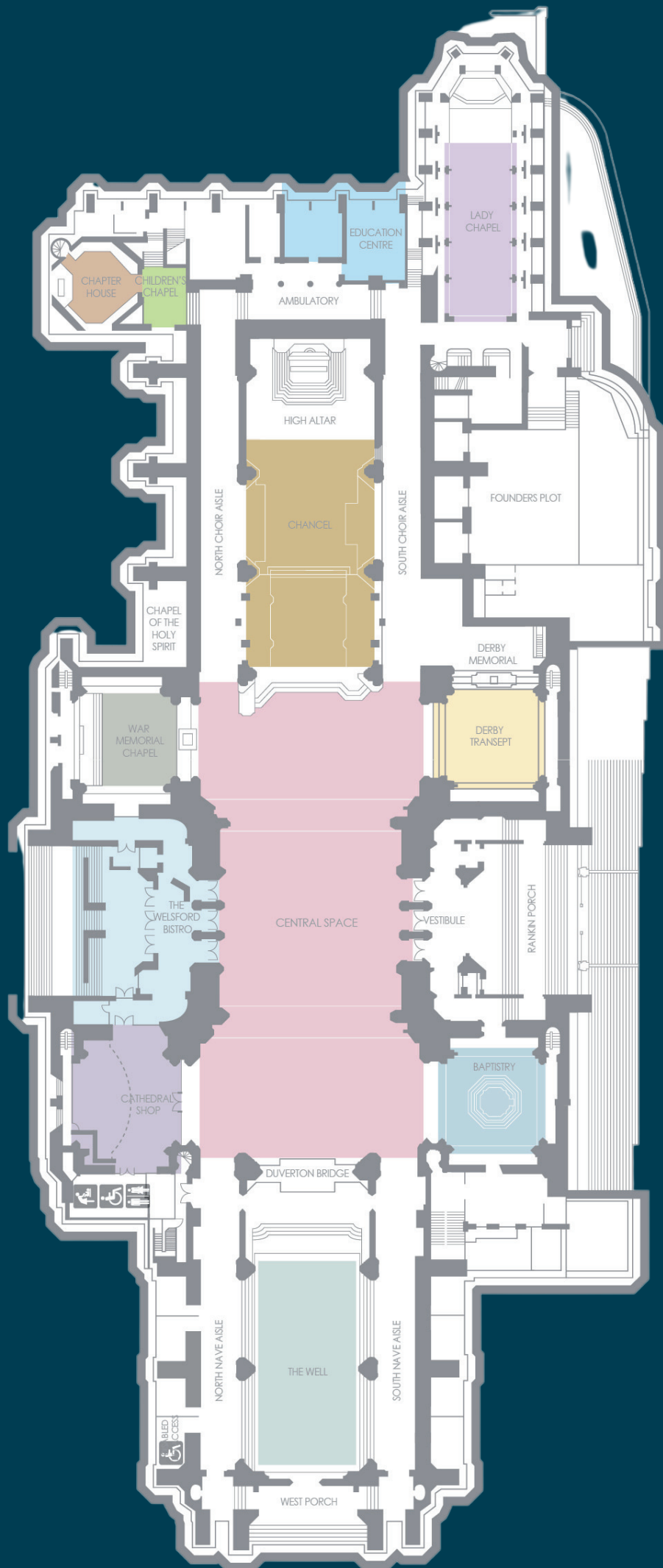
Bus

From City Centre - No.82 or 86 bus from Lime Street to Berry Street and walk along Rodney Street, or Citylink route C3 from Queens Square Bus Station or Marybone, which connects the main city hospitals, the city centre shops and the 2 cathedrals

Car

If using a Sat Nav, tap in L1 7AZ.

From M6 North or South, leave at Junction 21A and take M62 (West) for Liverpool. At the end of the M62, follow signs for City Centre and for 'Cathedrals' and then the specific signs for 'Liverpool Cathedral'. From Cheshire, follow signs to Liverpool via Tunnels, there is a £1.50 toll each way for private vehicles. When reaching Liverpool follow



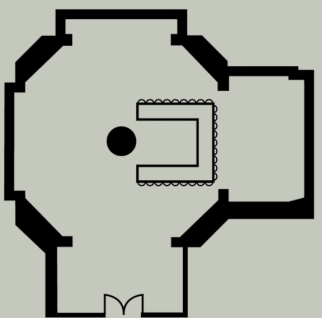
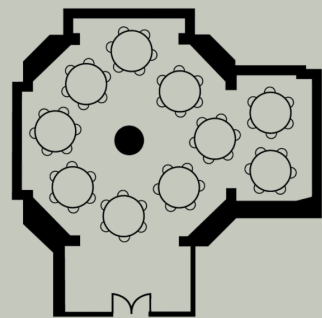
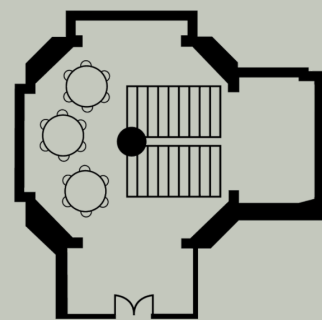


© Mark Loudon

Dining Room

Dimensions:
15m x 10m
height 3.4m

Capacities:
Standing reception: 150
Theatre style 75
Banquet 100
Class style 60
Boardroom 30



Concert Room

Dimensions:
15m x 10m
height 3.4m

Capacities:
Standing reception 120
Theatre style 100
Banquet 100
Class style 60
Boardroom 40

